



KLYDE WARREN
PARK

Press Kit

Media Contact: Joanna Singleton
E: jsingleton@jacksonspalding.com
O: (214) 269-4401
M: (214) 206-5963



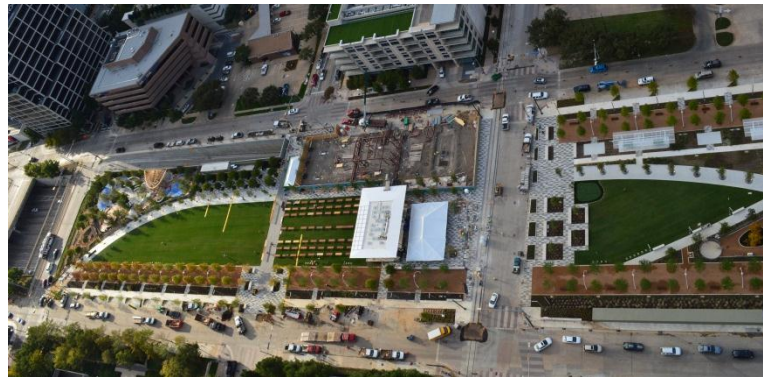
Park Contact: Joanna Singleton
Jackson Spalding
214-269-4401
jsingleton@jacksonspalding.com

Grand Opening Contact: Tony Fay
Fay + Sawers Productions
tfay@faysawers.com
972-273-0794

Klyde Warren Park Celebrates Grand Opening

DALLAS (October 26, 2012) – This weekend, Dallas will celebrate the grand opening of its newest landmark, Klyde Warren Park, the 5-acre deck park built over the recessed freeway in the center of the city. Klyde Warren Park Grand Opening Celebration presented by Chase and J.P. Morgan will begin with a ribbon cutting on Oct. 27 to kick-off a weekend full of more than 50 free and open-to-the-public activities.

“After 10 years of research, planning and preparation toward one big dream, we are honored to officially welcome Dallas residents and visitors to our city’s new town square,” said Jody Grant, chairman of board of the Woodall Rodgers Park Foundation. “Klyde Warren Park will help transform this area into a pedestrian-friendly hub of activity for our city to enjoy.”



October 24, 2012

Grand opening activities for all age groups are designed to showcase the Park’s personality, as well as the programming that will be available year-round. Organizers expect a crowd of 40,000 visitors throughout the weekend to enjoy family-friendly activities such as concerts, nature classes, storytelling, live music, opera, ballet, yoga, Zumba, croquet, dog training demonstrations, chess matches, live painting, knitting lessons, dance and art classes, architecture tours, and more. A full schedule can be found at www.klydewarrenpark.org.



October 1, 2009

On Saturday night, the park will host The Concert for Dallas presented by Deloitte, featuring performances by The Polyphonic Spree and Trombone Shorty & Orleans Avenue, which will be followed by fireworks over the Dallas skyline, presented by Oncor. Tickets are required for the concert. On Sunday, music fans can enjoy A Taste of Cherokee Creek Music Festival featuring Bob Schneider and Jimmy LaFavre. On Sunday night, grand opening Honorary Chair Owen Wilson will introduce his film “Midnight in Paris,” which will be shown as the first movie night in the Park, presented by Hillwood.

The park is planned to be a hub of activity with four to five events per day. Programming will be free and ranges from yoga and bootcamp to movie nights and outdoor concerts. The park will create a front lawn for the city's Arts District, the largest contiguous cultural district in the U.S.

"Klyde Warren Park turns eight lanes of noisy, disruptive freeway into a beautiful park, creating green space out of thin air," said Mark Banta, president of Klyde Warren Park.

The park is intended to promote sustainability, create pedestrian-friendly space in the center of the city, and enhance quality of life downtown. It will have a positive economic impact by boosting surrounding real estate development, increasing property values and increasing city tax revenue. The increased foot traffic should be catalytic for the surrounding arts institutions and street-level business opportunities.

Klyde Warren Park is the result of a public, private partnership, and the park will be privately operated and managed by the Woodall Rodgers Park Foundation. On Monday, October 29, Klyde Warren Park will officially be open daily from 6 a.m. to 11 p.m.

"The park is a free destination where people can gather to enjoy what living in a great city like Dallas has to offer," said Banta. "We can't wait to welcome the park's first visitors."

Additional Grand Opening sponsors include: Fossil, Sarah and Ross Perot, Jr./Hillwood, Sheila and Jody Grant, Museum Tower, Texas Capital Bank, Tenet Healthcare Corp./Melissa and Trevor Fetter, Hunt Consolidated, Inc., Jenny & John Kirtland and Tami Thomsen, Worldlink, Inc., Nancy and Randy Best, TXU Energy, Ernst & Young LLP, Highside Capital Mgmt., McKool Smith, Bernadette Schaeffler Collection, 2000 McKinney, Albertsons, Nancy and Randy Best, Boardwalk Auto Group, Carlson Capital, LP, Vinson & Elkins L.L.P., City of Dallas, Coca-Cola Refreshments, Ducky Bob's Event Specialists, Sharon & Ed Fjordbak, GoVision, Hall Wines, Integrated Design Group, Inc., Ben E. Keith Co., Lambert Landscape Company, Potbelly Sandwich Shops, Pyrotecnico, Republic National Distributing Co., Rosewood Hotels, Space Light of Texas by Airstar, Todd Events, Urnameonit.com, DJ Lucy Wrubel, CBS Radio, CBS 11/TXA 21, KERA and KXT.

About Klyde Warren Park

Klyde Warren Park will serve as a central gathering space for Dallas and its visitors to enjoy in the heart of the city. The 5.2-acre park will create an urban green space over the existing Woodall Rodgers Freeway between Pearl and St. Paul Streets in downtown Dallas. The Park includes a performance stage, restaurant, shaded walking paths, a dog park, a children's park, great lawn, water features, an area for games and much more.

Connectivity is central to the park's purpose. Klyde Warren Park will promote increased pedestrian, trolley and bicycle use between Uptown, Downtown and the Arts District, contributing to a more walkable city center.

Klyde Warren Park will create a front lawn for the surrounding cultural offerings including the AT&T Performing Arts Center, Dallas Museum of Art, Morton H. Meyerson Symphony Hall, Nasher Sculpture Center, Trammell & Margaret Crow Collection of Asian Art, Booker T. Washington High School for the Visual & Performing Arts and the future Perot Museum of Nature and Science.

Construction on the deck plaza began in October 2009. Klyde Warren Park will host a free, open-to-the-public grand opening weekend Saturday, Oct. 27 and Sunday, Oct. 28.

Design is led by The Office of James Burnett, Thomas Phifer and Partners, and Jacobs Engineering Group, Inc. The Texas Department of Transportation selected Archer Western as the contractor for

construction of the deck plaza. McCarthy Building Companies, Inc. is currently building the park amenities. Bjerke Management Services provides program management services to the Woodall Rodgers Park Foundation.

Mark Banta is the President of Klyde Warren Park. Jody Grant serves as Chairman of the Board of the Woodall Rodgers Park Foundation and is joined by board members Elaine Agather, Nancy Best, Garrett Boone, Leo Corrigan, Ossa Fisher, Ed Fjordbak, Scott Ginsburg, Sheila Grant, Linda Hart, Mitch Hart, Jeff Jackson, Tom Leppert, John Muse, Bob Shapard, Rob Walters, Kelcy Warren and John Zogg.

For more information, visit www.KlydeWarrenPark.org or call 214-716-4500.

#



Park Contact: Joanna Singleton
Jackson Spalding
214-269-4401
jsingleton@jacksonspalding.com

Grand Opening Contact: Tony Fay
Fay + Sawers Productions
tfay@faysawers.com
972-273-0794

Klyde Warren Park Ribbon Cutting Ceremony: Saturday, Oct. 27

What: **Grand Opening Ribbon Cutting Ceremony:** Please join the Woodall Rodgers Park Foundation for Klyde Warren Park's official ribbon cutting ceremony presented by Museum Tower. Hear from local civic, state and business leaders about the significance of Klyde Warren Park and celebrate this monumental day for the City of Dallas. Following the ceremony, the Dallas Symphony Orchestra will perform from 11 a.m. to 12 p.m. Interviews will be available upon request after the event.

Speakers:

- Jody Grant, Chairman of the Board, Woodall Rodgers Park Foundation
- Mayor Mike Rawlings
- Lt. Governor David Dewhurst
- Congresswoman Eddie Bernice Johnson
- Anne Motsenbocker, Dallas President and Regional CEO, JPMorgan Chase

Who: Open to the **general public**.

When: **Saturday, Oct. 27 from 10:15 - 11 a.m.**

Where: Klyde Warren Park's **Muse Family Performance Pavilion** at 2012 Woodall Rodgers Freeway. Parking instructions will be included with media credentials. **All media must request credentials.**

About Klyde Warren Park's Grand Opening

Klyde Warren Park **will open on Saturday, Oct. 27 and Sunday, Oct. 28** with a free, open to the public grand opening weekend presented by JPMorgan Chase and hosted by Honorary Chair Owen Wilson. The weekend will offer activities for all age groups, designed to showcase the park's personality. The park will be open to the public on Saturday from 9 a.m. to 4 p.m. (ticketed concert on Saturday night) and Sunday 9 a.m. to 11 p.m. For more information, visit www.KlydeWarrenPark.org.

###

SATURDAY

Family Day Presented by



Free admission to Dallas Museum of Art (11 AM - 6 PM), Nasher Sculpture Center (11 AM - 6 PM) and Crow Collection of Asian Art (10 AM - 11 PM) Presented by Fossil

10 AM - 3 PM

Dallas Center for Architecture Family Activities

10:15 - 11 AM

Ribbon Cutting Presented by Museum Tower (Muse Family Performance Pavilion)

11 AM - 12 PM

The Dallas Symphony Orchestra (Muse Family Performance Pavilion)

11 AM - 1 PM

Perot Museum of Nature and Science Activity Tables (Children's Park)

12 - 1:30 PM

Croquet with the YMCA (East Lawn)

12 - 2 PM

Mah Jongg with Marlene Stern (*The Dallas Morning News* Reading and Games Room)

12 - 3 PM

Fido's Finest Dog Training (Ginsburg Family Great Lawn)

12 - 4 PM

University of Texas at Dallas Chess Simul Play (*The Dallas Morning News* Reading and Games Room)

12:30 - 1:15 PM

Bridge the Gap Chamber Players Presents the Altius String Quartet (Muse Family Performance Pavilion)

12:30 - 2 PM

University of Texas at Dallas Chess Robots (*The Dallas Morning News* Reading and Games Room)

1 - 3 PM

Dallas Museum of Art Studio Creations (Children's Park)

1:15 - 2:15 PM

Booker T. Washington High School Jazz Combo I (Muse Family Performance Pavilion)

1:30 - 3 PM

Badminton with the YMCA (East Lawn)

2 - 2:30 PM

Dallas Skyline 360 Tour with the Dallas Center for Architecture (*The Dallas Morning News* Reading and Games Room)

2 - 3 PM

J.D. Miller - Live Painting Demonstration (Ginsburg Family Great Lawn)

2 - 4 PM

Knitting with the Shabby Sheep (*The Dallas Morning News* Reading and Games Room)
Pétanque Lessons with the Dallas Pétanque Club (The Commons)

2:15 - 3 PM

SMU Meadows School of Music (Muse Family Performance Pavilion)

3 - 4 PM

Yoga with Dallas Yoga Center (Ginsburg Family Great Lawn)

4 - 7 PM

Park Closed for Concert Preparation

7 - 11 PM

The Concert for Dallas Presented by Deloitte

10:45 PM

Fireworks Presented by Oncor

SUNDAY

Sunday in the Park Presented by



CONSOLIDATED, INC.

Free admission to Dallas Museum of Art (11 AM - 6 PM), Nasher Sculpture Center (11 AM - 5 PM) and Crow Collection of Asian Art (10 AM - 11 PM) Presented by Fossil

9 - 10 AM

Zumba with the YMCA (Ginsburg Family Great Lawn)

10 - 11 AM

Tai Chi with the Crow Collection of Asian Art (Ginsburg Family Great Lawn)

10 AM - 12 PM

Knitting with the Shabby Sheep (*The Dallas Morning News* Reading and Games Room)

10 AM - 6 PM

Dallas Center for Architecture Family Activities

11 - 11:30 AM

Dallas Opera (Muse Family Performance Pavilion)

11 AM - 12 PM

Bikram Yoga Dallas (Ginsburg Family Great Lawn)

11 AM - 1 PM

Perot Museum of Nature and Science Activity Tables (Children's Park)

11 AM - 2:30 PM

Fido's Finest Dog Training (Ginsburg Family Great Lawn)

11:30 AM - 12 PM

Daiko Drummers Presented by the Crow Collection of Asian Art (Muse Family Performance Pavilion)

12 - 1 PM

Dallas Black Dance Theatre (Muse Family Performance Pavilion)

West Coast Swing and Argentine Tango Performance Presented by Studio 22 (Muse Family Performance Pavilion)

12 - 2 PM

Mah Jongg with Marlene Stern (*The Dallas Morning News* Reading and Games Room)

1 - 1:45 PM

Anita N. Martinez Ballet Folklorico (Muse Family Performance Pavilion)

Yogiños with the Crow Collection of Asian Art (Children's Park)

1 - 2 PM

Alejandrina Drew Presented by The Dallas Public Library (*The Dallas Morning News* Reading and Games Room)

1 - 2:30 PM

Croquet with the YMCA (East Lawn)

1 - 3 PM

Dallas Museum of Art Studio Creations (Children's Park)

1:45 - 2:15 PM

Mayan Ball Game with the Dallas Museum of Art (Ginsburg Family Great Lawn)

Salsa Team Performance Presented by Studio 22 (Muse Family Performance Pavilion)

2 - 2:30 PM

Dallas Skyline 360 Tour with the Dallas Center for Architecture (*The Dallas Morning News* Reading and Games Room)

2 - 3 PM

Storytelling for Kids with the Dallas Storytelling Guild (Children's Park)

2 - 5 PM

Pétanque Lessons with the Dallas Pétanque Club (The Commons)

2:15 - 2:45 PM

Texas Ballet Theater (Muse Family Performance Pavilion)

2:30 - 3:30 PM

Storytelling for Grown Ups with the Dallas Storytelling Guild (*The Dallas Morning News* Reading and Games Room)

2:30 - 4 PM

Badminton with the YMCA (East Lawn)

2:45 - 3:30 PM

Booker T. Washington High School Dance Department (Muse Family Performance Pavilion)

3 - 4:30 PM

Dallas Children's Theater Activities (Children's Park)

3 - 5 PM

Knitting with the Shabby Sheep (*The Dallas Morning News* Reading and Games Room)

4 - 6 PM

J.D. Miller - Live Painting Demonstration (Ginsburg Family Great Lawn)

4:30 - 6:30 PM

A Taste of the Cherokee Creek Music Festival (Muse Family Performance Pavilion)

6:30 - 7 PM

Music of Michael Prysock (Ginsburg Family Great Lawn)

7:45 - 10 PM

Movie Screening: *Midnight in Paris* (Ginsburg Family Great Lawn)

5 Tips for Klyde Warren Park Grand Opening Weekend

- 1. Plan ahead.** There will be road closures, so plan your trip in advance! We advise everyone to check the map (below) for closures and arrive early to avoid traffic. During grand opening weekend, parking will be available in surrounding garages and surface lots near the Park. Parking rates will begin at \$5 for the entire day.
- 2. Take the DART or Trolley.** We're expecting a large crowd, so we encourage you to use an alternate method of transportation to get here during grand opening (or any day!). There are two DART rail stops close to the Park: St. Paul station and the Arts District Pearl station (NOTE: the Arts District Pearl station will be providing extra service this weekend). The closest McKinney Avenue Trolley stop is at St. Paul and Woodall Rodgers, across from the Dallas Museum of Art.
- 3. Travel light.** Just bring yourself! There will be bag checks (firearms, chairs, food and alcohol are not permitted during grand opening). Food and beverages will be available for purchase at the Park.
- 4. Enjoy 50+ Free Activities on Saturday and Sunday!** From yoga, croquet and painting, to music festivals, children's activities and movie night, grand opening weekend will be fun for everyone. For a full schedule of activities, please visit <http://www.klydewarrenpark.org/Grand-Opening/index.html>
- 5. On Saturday night, everyone needs a wristband.** The Concert for Dallas, which begins at 7 p.m., is a ticketed event. Adults and children attending the concert must have a wristband or they will not be allowed in.





Klyde Warren Park Fact Sheet

PARK FEATURES:

- Ginsburg Family Great Lawn
- Nancy Collins Fisher Pavilion – Home to Savor and Relish Restaurant and Kiosk
- Chase Promenade
- Children’s Park
- The Botanical Garden
- *The Dallas Morning News* Reading and Games Room
- My Best Friend’s Park (Dog Park)
- Muse Family Performance Pavilion
- Fountains (Five Total)
- The Commons (Recreation Areas)
- Jane’s Lane (Groves)
- Restrooms

PROGRAMMING:

Klyde Warren Park will be a highly active space, providing daily free programming for the public ranging from yoga to book signings to outdoor concerts and films. Partners thus far include Booker T. Washington High School for the Performing and Visual Arts, Dallas Museum of Art, AT&T Performing Arts Center, The Dallas Opera, Dallas Children’s Theater, Perot Museum of Nature and Science, Dallas Public Library, University of North Texas, University of Texas – Dallas, Bikram Yoga Dallas, YMCA, Studio 22, Dallas Yoga Center and many others. A small sample of activities includes:

- Music festivals
- Free concerts
- Chess and checkers
- Yoga, Zumba, bootcamps
- Fooseball and ping pong
- Ballroom dancing
- Putting green
- Storytelling
- Children’s theatre
- Juggling, magic and puppet shows

THE DECK:

Klyde Warren Park creates a bridge over the recessed freeway, consisting of concrete pre-stressed box beams set on columns constructed outside the former walls of the freeway and supported by a new center wall. There are approximately 1,200 linear feet of freeway enclosed by the deck forming a short tunnel. The concrete beams are arranged in groups with spacing in between the groups. Concrete slabs span the spaces connecting to the bottoms of the beams and forming trenches. The trenches act like planter boxes, allowing the trees to grow to the desired size. A combination of Geofam and lightweight soil fill the trenches and cover the beams to provide the planting material for the landscaping. The majority of the Park will have a 12 inch layer of topsoil, with the trenches providing the depth of soil needed for trees.

QUICK FACTS:

- Klyde Warren Park is over 200,000 square feet – 1,045 feet long and 210 feet wide. The deck is 6.5 feet deep.
- The park will add 322 trees, 904 shrubs, 3,292 assorted plants to the landscape of the city.
- Trees are mostly Texas-native or adaptive species: Shumard Red Oak, Bur Oak, Pond Cypress, River Birch, Chinese Pistache and Lacebark Elm.
- Plants will include 32 native Texas species.
- There will be 40,000 square feet of lawn.
- The bridge structure includes 300 concrete box beams and 6,900 cubic yards of concrete to form the columns that support the beams. There will be over 4,700 linear feet of beam and trench panel supporting the structure.
- The Park will use 25,000 cubic yards of a mixture of soil and Geofoam.
- There will be 65,000 square feet of paved plazas, walkways and seating areas. There will also be 28,000 square feet of crushed granite.
- 60% of the park will be shaded.
- The Park will feature 13 outdoor “rooms,” each with its own set of programmed activities.
- Around 30 medium-sized dogs can enjoy My Best Friend’s Park comfortably.
- There are some metered parking spaces around the park, and 9,000 parking spaces in parking garages within a few blocks of the park. High peak park use will naturally coincide with off peak business hours.
- The capacity of the children’s park is approximately 100 children.
- Klyde Warren Park does not have a weight maximum capacity, but will likely limit large events to around 10,000 people to ensure an enjoyable event experience.
- The Muse Family Performance Pavilion is regulation size at 60’ x 40’ and can accommodate 120 performers and is open on all sides.
- Savor and Relish restaurant and café will be run by Chef John Coleman, formerly with the Ritz Carlton:
 - The restaurant is approximately 6,000 square feet and will seat a total of 300 guests. This includes 3,500 square feet of patio space from which guests can watch performances on the stage or observe other activities in the Park.
 - Savor, the park’s main restaurant, will have a gastropub concept with an emphasis on fresh food and shared experiences.
 - Relish, which will debut as a food truck until the full restaurant and permanent kiosk open in mid-2013, will offer visitors a quick bite to enjoy in the park. Think burgers, cookies, etc. The food truck will be open for breakfast and lunch.
- The total walk around perimeter would be 2,800 feet, which is approximately 1/2 mile.

322 trees

1045 feet long

\$110 million project

6,000 square foot
Savor and Relish
restaurant

SUSTAINABILITY:

Klyde Warren Park incorporates numerous features intended to improve the environment of the area and be sustainable through the future. A few examples:

- The Park incorporates the use of native tree and plant species. The Park's trees will sequester an estimated 7 tons of carbon per year at maturity. The trees will act as a natural bio-filter and reduce storm water run-off and mitigate urban heat.
- The water features will use a water reclamation system and a double purification system, substantially reducing the use of potable water and the disposal of "dirty" water. This is about 18 bathtubs of water saved every day.
- The restaurant is registered for LEED Silver certification level, and includes the use of geothermal energy for cooling and heating, high efficiency light fixtures, recycled materials and more.
- Klyde Warren Park will have solar panels on the light poles and a high-efficiency lighting management system.
- The cover over the freeway will reduce traffic noise for the surface level pedestrian traffic, as well as the adjacent buildings.

FUNDING:

Construction is funded through a public, private partnership including \$20 million in bond funds from the city of Dallas, \$20 million in highway funds from the state and federal government through TxDOT and more than \$51 million from private donations. In March 2009, the Park was selected to receive \$16.7 million in stimulus funds that are specifically for transportation enhancement construction. The Foundation has raised \$108.5 million of its \$110 million goal to date.

The park is designed to be a self-sustaining non-profit business. Ongoing revenue will come from food and beverage sales, restaurant rent, sponsored events, in-kind contributions, advertising, venue rentals, corporate and individual gifts, and an operating and capital reserve.

TIMELINE:

The initial feasibility study was conducted in 2004. The Woodall Rodgers Park Foundation was formed as a 501c3 in 2005. Construction on the deck began in October 2009. Beam installation was completed in November 2011 and the first trees were planted in December 2011. The park's grand opening will be celebrated October 27-28, 2012. For more timeline and project milestone information, visit klydewarrenpark.org.

LEADERSHIP:

Mark Banta is the President of Klyde Warren Park. Jody Grant serves as Chairman of the Board of the Woodall Rodgers Park Foundation and is joined by board members Elaine Agather, Nancy Best, Garrett Boone, Leo Corrigan III, Ossa Fisher, Ed Fjordbak, Scott Ginsburg, Sheila Grant, Linda W. Hart, Mitch Hart, Jeff Jackson, Tom Leppert, John Muse, Rob Walters, Kelcy Warren and John Zogg.

DESIGN & CONSTRUCTION TEAM:

- Landscape Architect: The Office of James Burnett
- Restaurant and Pavilion Architect: Thomas Phifer and Partners
- Program Manager: Bjerke Management Solutions
- Engineering and Design Consultant: Jacobs Engineering Group
- Programming: Dan Biederman and ETM Associates
- General Contractors: Archer Western and McCarthy and Associates
- Amenity Structural Engineer: Enres Studios
- LEED Consultants: Ware Architecture
- Fountains: Fluidity Design Consultants
- Lighting: Focus Lighting

CONTACT US:

Web: KlydeWarrenPark.org

Facebook: [Facebook.com/TheParkDallas](https://www.facebook.com/TheParkDallas)

Twitter: [@KlydeWarrenPark](https://twitter.com/KlydeWarrenPark)

###



Frequently Asked Questions

General Event Information

What is Klyde Warren Park?

Klyde Warren Park serves as a central gathering space for Dallas and its visitors to enjoy in the heart of the city. The 5.2-acre deck park, designed by the Office of James Burnett, creates an urban green space over the existing Woodall Rodgers Freeway between Pearl and St. Paul Streets in Downtown Dallas. The highly programmed park includes a performance pavilion, restaurant, shaded walking paths, dog park, children's park, great lawn, water features, and an area for games and much more. To volunteer or make a donation, please visit www.KlydeWarrenPark.org or call 214-716-4500.

What is Klyde Warren Park Grand Opening Celebration Presented by Chase and J.P. Morgan?

The Grand Opening Celebration is a two-day festival (Oct. 27-28, 2012) that includes a ribbon cutting ceremony, an outdoor performance by the Dallas Symphony Orchestra, concerts on Saturday evening and Sunday afternoon from the Muse Family Performance Pavilion and sneak peeks at the Park's ongoing programming. Film actor and Dallas native Owen Wilson serves as the event's Honorary Chair.

What is The Concert for Dallas Presented by Deloitte?

The Concert for Dallas Presented by Deloitte is the signature music festival highlighting the opening weekend celebration. The concert will feature performances by Grammy-nominated Trombone Shorty & Orleans Avenue and Dallas indie rock icons, The Polyphonic Spree. DJ Lucy Wrubel will also perform. The show is scheduled for Saturday, Oct. 27, at 7 p.m. on Klyde Warren Park's Ginsburg Family Great Lawn.

Are tickets still available to the Concert for Dallas?

Approximately 6,000 free general admission wristbands (which are used for this event in place of tickets) to The Concert for Dallas were made available to the public on the morning of October 9 and “sold out” in less than an hour.

What are rules for The Concert for Dallas Presented by Deloitte?

In the interest of public safety, please do not bringing coolers, contraband, weapons, skateboards, rollerblades, scooters, laser pointers, Frisbees or professional camera equipment (any camera with a detachable lens).

Please also be aware:

- No video and audio recording equipment/devices.
- No unauthorized sales, solicitations, and distributions are allowed.
- No access to the backstage area without appropriate credentials.
- Persons entering the site may be subject to search at any time.
- The facility reserves the right to refuse admission or eject any person violating the facility, local, state or federal laws or whose conduct is deemed illegal, disorderly, or offensive by management.

What is Party in the Park?

The Concert for Dallas: Party in the Park is presented by Texas Capital Bank and is a premium experience offered in conjunction with The Concert for Dallas. Passes include access to a hospitality area featuring a variety of foods provided by leading area restaurants, cocktails, and a year-long membership in “Friends of the Park.” Party in the Park pass holders also receive complimentary valet parking courtesy of Boardwalk Auto Group and have access to self-parking provided by 2000 McKinney.

Restaurant sponsors include Bread Winners Café & Bakery, Bandito’s Tex Mex Cantina, The Capital Grille, The Common Table, Dee Lincoln’s Dining Room & Bubble Bar, Katy Trail Ice House, Kelly’s at the Village, Original Cupcakery, Place at Perry’s, and Potbelly Sandwich Shop. Beverage sponsors are Coca-Cola Refreshments, Ben E. Keith Co., and Republic National Distributing Co.

Proceeds from Party in the Park help pay for the Grand Opening Celebration and benefit Friends of the Park. To purchase tickets, go to: www.klydewarrenpark.org

Why does the Park need to be cleared at 4 p.m. on Saturday, October 27?

At 4 p.m. on Saturday, October 27, guests will be asked to leave the Park so it can be set up for The Concert for Dallas. Once the Park is cleared and re-set, only those with a wristband will be re-admitted to the concert area. Even those who have wristbands must clear the area when asked. You will be re-admitted once the Park has been re-opened. If you do not plan to attend The Concert for Dallas, there will be plenty of entertainment outside of the Park's main footprint should you decide to stay and enjoy the rest of the afternoon. For example the Crow Collection, DMA and Nasher Sculpture Center will be open for free that day and for extended hours courtesy of our partner Fossil.

What if it rains?

All weekend activities are "rain or shine," so check the local weather forecast and dress appropriately. Should weather become dangerous (such as lightning or high winds), events will be delayed or cancelled.

Will there be fireworks?

Yes, The Concert for Dallas will culminate with a fireworks display presented by Oncor.

What types of food and beverage will be available?

Concessions will be available via food trucks and other stations situated primarily in a food court area presented by Vinson & Elkins L.L.P. Choices will include traditional festival foods such as hot dogs, corn dogs, pretzels and ice cream, as well as healthy options. Beer and wine will be available for attendees who are 21 years of age or older. Other alcoholic beverages will be available during the Saturday evening concert.

May I bring in my own food?

For Grand Opening weekend, guests are prohibited from bringing their own food into the Park. Guests are encouraged to enjoy the variety of concessions offered at Grand Opening. Coolers will also not be allowed in the Park during Grand Opening weekend.

May I bring my own chairs?

In an effort to maintain the Park's new lawn, patrons will not be allowed to bring in chairs during the Grand Opening Celebration. However, the Park will have its own chairs scattered throughout. These are available on a first-come, first-served basis. Keep in mind that unless otherwise noted, this is "festival viewing" with no reserved seating and patrons may be standing in front of you during a performance. We want everyone to enjoy the concerts and have a great time. Be respectful of people around you and please share

your space, get to know your neighbors, and make room for others.

What should I wear?

Park attire is appropriate as long as, in keeping with the spirit of the event, it is family friendly. The event footprint is wide and parts of the Park cover uneven terrain, so wear comfortable shoes. Be sure to check the weather forecast for guidance on what to wear.

Is the Grand Opening Celebration wheelchair accessible?

Yes.

Are pets allowed?

Klyde Warren Park is an urban oasis not only for humans, but their furry companions. All opening celebration activities are pet-friendly, except the ticketed The Concert for Dallas. Please remember to keep your pet on a leash and bring the appropriate environmentally-friendly, pet-waste disposal bags. Pets are also not allowed in adjacent indoor cultural institutions.

Is smoking allowed?

No. Klyde Warren Park is a smoke free area.

How do I pay, cash or coupons?

All vendors accept cash at the Grand Opening Celebration, no coupons are needed.

Are there ATMs on site?

Yes.

Where can I find a complete listing of weekend activities?

Please visit www.klydewarrenpark.org to view a list of the weekend activities and performances.

Thanks to Fossil, The Dallas Museum of Art, Nasher Sculpture Center and The Crow Collection of Asia Art are admission-free on Saturday, October 27. These museums are also admission-free on Sunday, October 28, due to Art in October. Please visit the following links for information about museum-hosted events during the weekend.

The Crow Collection of Asian Art
www.crowcollection.com

Dallas Museum of Art
www.dm-art.org

Nasher Sculpture Center
www.nashersculpturecenter.org

What is Art in October?

The Park's opening celebration falls on the final weekend of the annual celebration of the Dallas Arts District, Art in October. The Dallas Arts District presents the third annual Art in October with a lineup of more than 170 events, many free or at a reduced price, during the month of October on Flora Street in Downtown Dallas. The month-long art celebration of the Dallas Arts District spotlights the district's organizations, venues, exhibitions and programs with a variety of events. Art in October 2012 is a diverse mix of stunning district-wide exhibitions and community oriented elements designed to entertain and engage audiences of all ages. For event information, please visit www.artinOctober.com.

Where do I park and what will it cost?

Public parking will be available for a fee in garages and surface lots in and around the Arts District. Parking rates begin at \$5. Please visit www.klydewarrenpark.org to view a parking map. Additional garage and surface lots are located at the following addresses:

2001 Federal St. (Corner of Harwood and Federal St.)
2015 Federal St. (Corner of Oliver St. and Federal St.)
714 Olive St. (in front of Plaza of The Americas)
734 Crockett St. (Corner of San Jacinto St. and Leonard St.)
2420 San Jacinto St. (Corner of San Jacinto St. and Jack Evans St.)
2402 San Jacinto St. (Corner of San Jacinto St. and Leonard St.)
2500 Ross Ave. (Corner of Ross Ave. and N. Hawkins St.)
2526 Ross Ave. (Corner of Ross Ave. and Routh St.)
719 Olive St. (Bryan Tower garage)
700 North Pearl St. (Plaza of The Americas garage)
300 Crescent Court (Rosewood Crescent Hotel)

Is there ADA parking?

Yes, ADA parking is available at Trammell Crow Center (2001 Ross Ave.) and the Dallas Museum of Art (1717 North Harwood St.).

Is there designated parking for motorcycles?

No. Motorcycles will park in the same garages and surface lots as cars.

Where can I park my bicycle?

There are bicycle racks throughout the entire event site (including The Arts District) but are available on a first-come, first-served basis. Bicycles cannot be ridden on the grass at Klyde Warren Park.

How do I get there?

I-35E going south: Take the Woodall Rodgers overpass (right hand exit) and take the first exit (Field/Griffin Streets). Follow signs to Field Street. Take a left on Ross and follow signs to various parking lots and garages. **PLEASE NOTE: THE PEARL EXIT GOING EAST ON WOODALL RODGERS WILL BE CLOSED.**

I-35E going north: Follow I-35E north and exit at Woodall Rodgers heading east. Exit Field/Griffin and follow signs to Field. Go left on Ross and follow signs to various parking lots and garages. **PLEASE NOTE: THE PEARL EXIT GOING EAST ON WOODALL RODGERS WILL BE CLOSED.**

I-75 going south: Exit Ross Avenue (right hand exit) and turn right on Ross. Follow signs to various parking lots and garages.

I-75 going north: Exit Ross Avenue (right hand exit) and turn left on Ross at the overpass. Continue west on Ross and follow signs to parking lots and garages

I-75 going north from I-30: Take Woodall Rodgers exit to the right. Exit St. Paul from Woodall Rodgers. It is a dedicated left turn. Continue to Ross and turn left and look for signs to parking lots and garages.

Tollway going south: Follow signs to Harry Hines Boulevard. Veer left onto St. Paul. Follow signs to parking lots and garages.

I-30 going west: Take I-75 Central Expressway for approximately ½ mile. Exit towards Denton. Veer right onto Woodall Rodgers. Take the St. Paul exit. Follow signs to parking lots and garages.

I-30 going east (from Fort Worth): Take I-35 North for app. ½ mile. Take the 75-Sherman exit. Take the Field Street (1st) exit on your right. Stay in the right-hand lane and follow the Field Street signs to McKinney Avenue. Turn right on McKinney Avenue/Access Road. Turn right at the stop light at St. Paul Street. Follow signs to parking lots and garages.

DART: The two DART rail stops that are closest to the Park are the St. Paul and the Pearl station. DART will be providing extra service to and from the Park at the Pearl station. Please see www.dart.org for complete details.

McKinney Avenue Trolley: The Trolley stop closest to the Park is at St. Paul and Woodall Rodgers, across from the Dallas Museum of Art. Please see www.mata.org for complete line schedules and stops.

What road closures should I be aware of?

Road closures for the Klyde Warren Park Grand Opening Celebration include:

- The north and south Woodall Rodgers Freeway access roads between North St. Paul St. and North Pearl St.
- North Olive St. between McKinney Ave. and Flora St.
- North Harwood St. between McKinney Ave. and Ross Ave.
- Flora St. from North Harwood St. to North Olive St.
- Westbound lane of Flora St. from North Pearl St. to North Olive St.
- Peal St. exit off Woodall Rodgers Freeway, eastbound

Please visit www.klydewarrenpark.org for an event map that includes all road closures.

What are the nearest hotels to the Park?

The Rosewood Crescent Hotel, located less than a half mile from the Park, is the Official Hotel of the Grand Opening Celebration. The Fairmont Dallas Hotel, also right around the corner from the Park, is offering a special rate of \$109/night during the event weekend. For more information or to book your overnight stay, please visit the following links:

Rosewood Crescent Hotel
www.rosewoodhotels.com

The Fairmont Dallas Hotel
www.fairmont.com/dallas

Who are the sponsors of the Klyde Warren Park Grand Opening Celebration Presented by Chase and J.P. Morgan?

TITLE

Chase and J.P. Morgan

PRESENTING

The Concert for Dallas
Deloitte

Complimentary Museum Admission
Fossil

Fireworks

Oncor

Movie Night

Sarah & Ross Perot, Jr./Hillwood

Dallas Symphony Orchestra

Sheila & Jody Grant

Ribbon Cutting

Museum Tower

Family Day

Tenet Healthcare Corp.

The Concert for Dallas:

Party in the Park

Texas Capital Bank

Sunday in the Park

Hunt Consolidated, Inc.

Entertainment Production

Jenny & John Kirtland

Tami Thomsen

Special Performance

WorldLink, Inc.

VIP Parking

2000 McKinney

Volunteers

Albertsons

Main Stage Performances

Nancy & Randy Best

Valet

Boardwalk Auto Group

Invitations

Carlson Capital, LP

VIP Reception

Ernst & Young LLP

Donor Dinner

Highside Capital Management

Floral

McKool Smith

Gifting

Bernadette Schaeffler Collection

Signage

TXU Energy

Food Court

Vinson & Elkins L.L.P.

SUPPORTING

City of Dallas

Coca-Cola Refreshments

Ducky Bob's Event Specialists

Sharon and Ed Fjordbak

GoVision

Hall Wines

Integrated Design Group Inc.

Ben E. Keith Co.

Lambert Landscape Company

Potbelly Sandwich Shops

Pyrotecnico

Republic National Distributing Co.

Rosewood Hotels

SPACE LIGHTING OF TEXAS by Airstar

Todd Events

UrNameOnIt.com

DJ Lucy Wrubel

RESTAURANT SPONSORS

Bread Winners Café & Bakery

Bandito's Tex Mex Cantina

The Capital Grille

The Common Table

Dee Lincoln's Dining Room & Bubble Bar

Katy Trail Ice House

Kelly's at the Village
Original Cupcakery
Place at Perry's
Potbelly Sandwich Shops

MEDIA

CBS Radio
CBS 11/TXA 21
KERA /KXT